

DoIT Departmental Support Imaging Solutions

Alex Davis & Sean Griffin



Technician Workflow Requirements

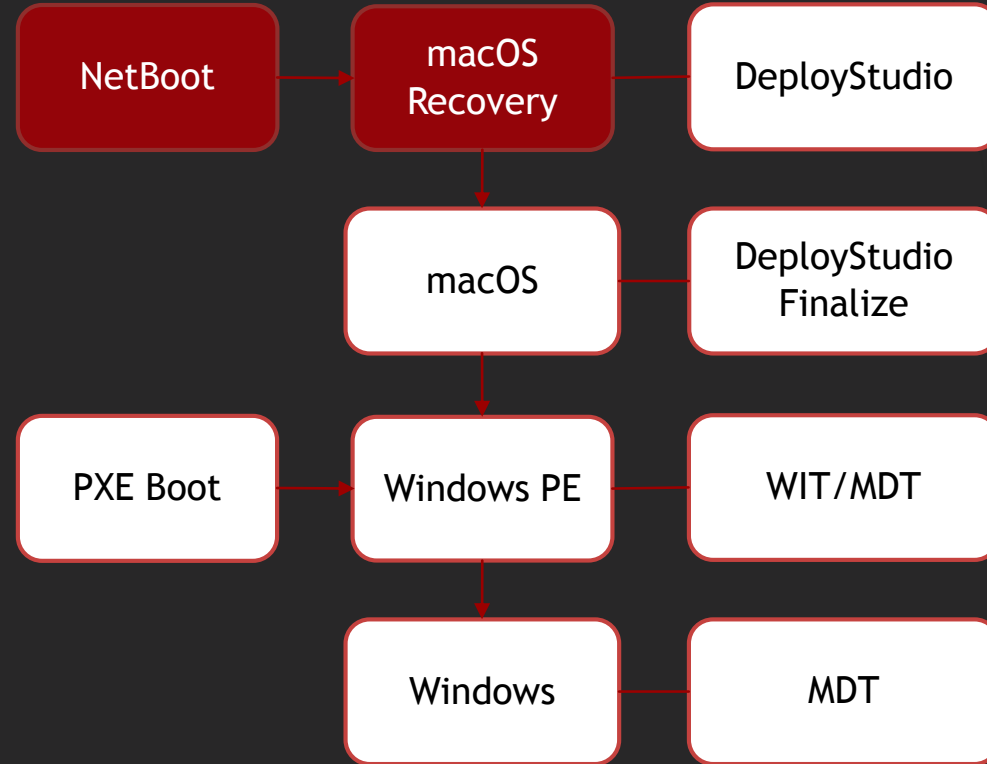
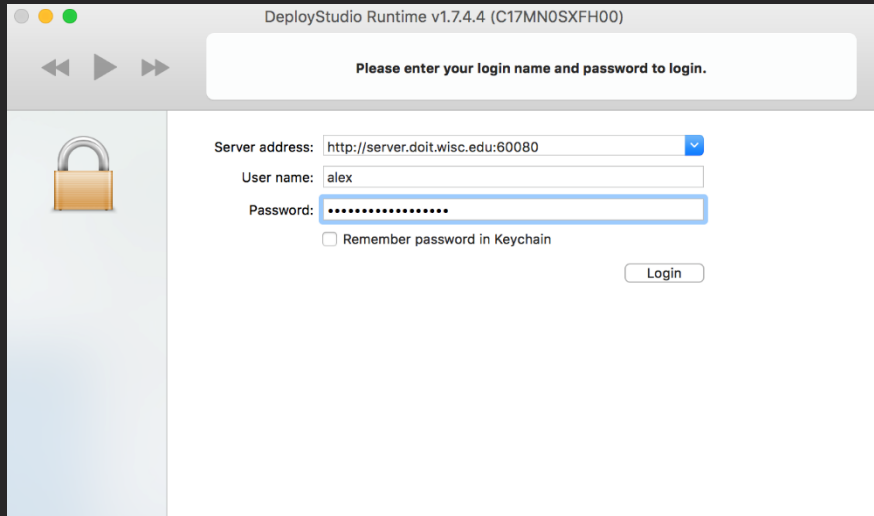
- ▶ Support all hardware
- ▶ Install Desired Supported OS
- ▶ Non-Standard Application Selection
- ▶ Custom Naming and AD Binding



InfoLab Workflow Requirements

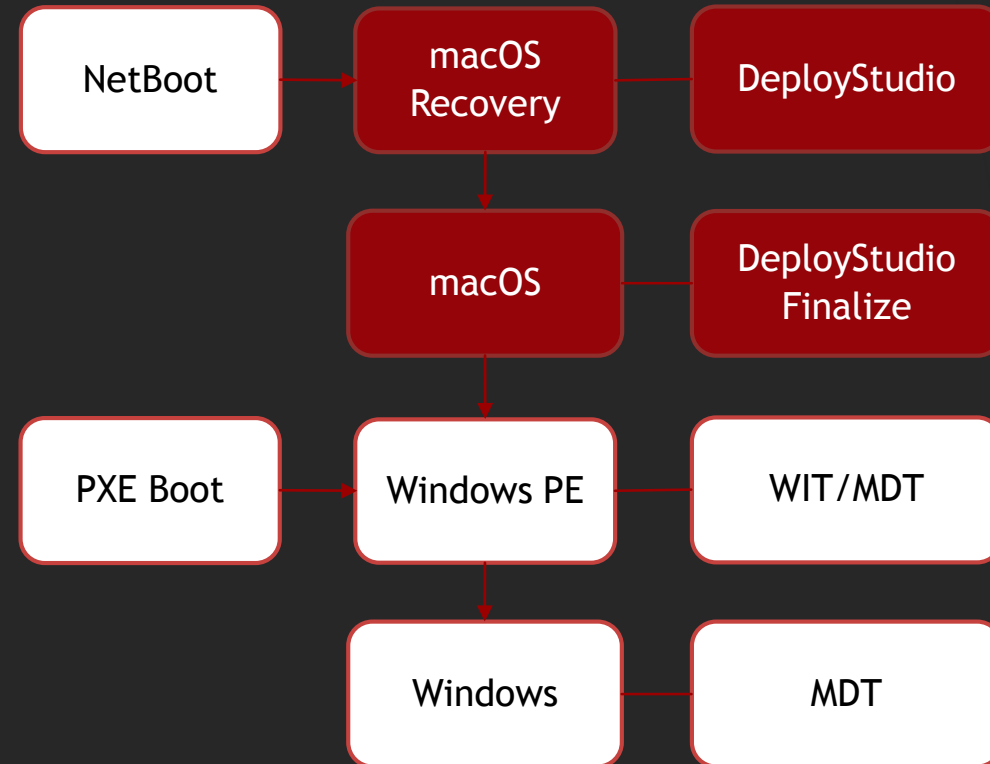
- ▶ Quick (1-hour)
- ▶ 1-Touch
- ▶ Dual-Boot
- ▶ Capacity for 300 machines/day

NetBoot

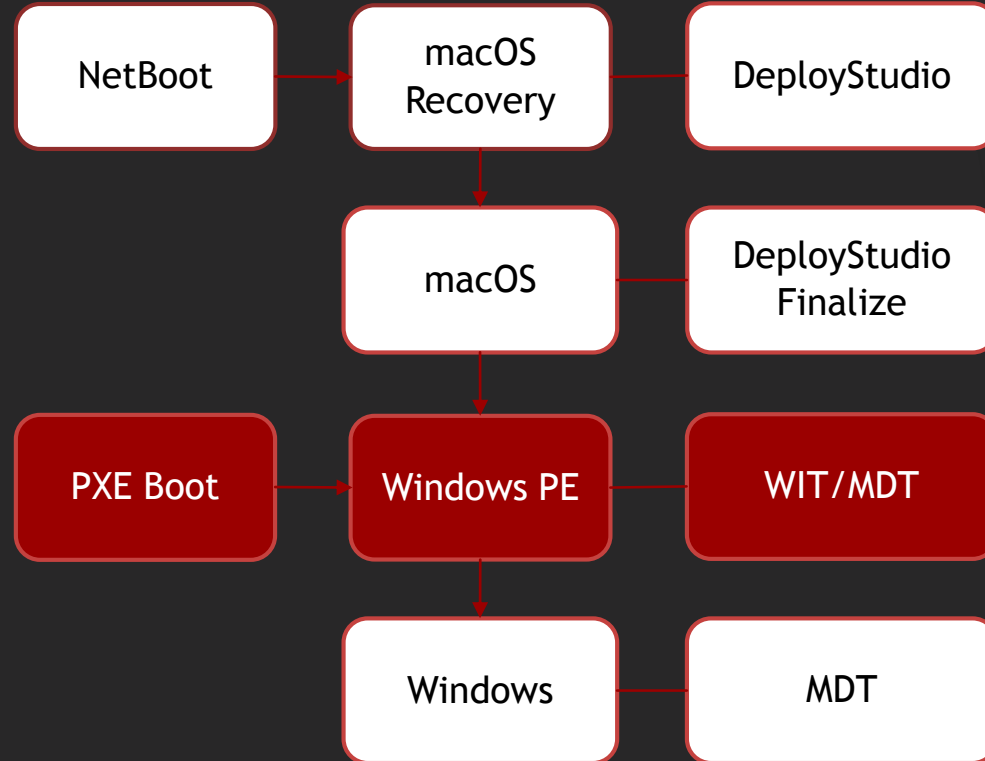
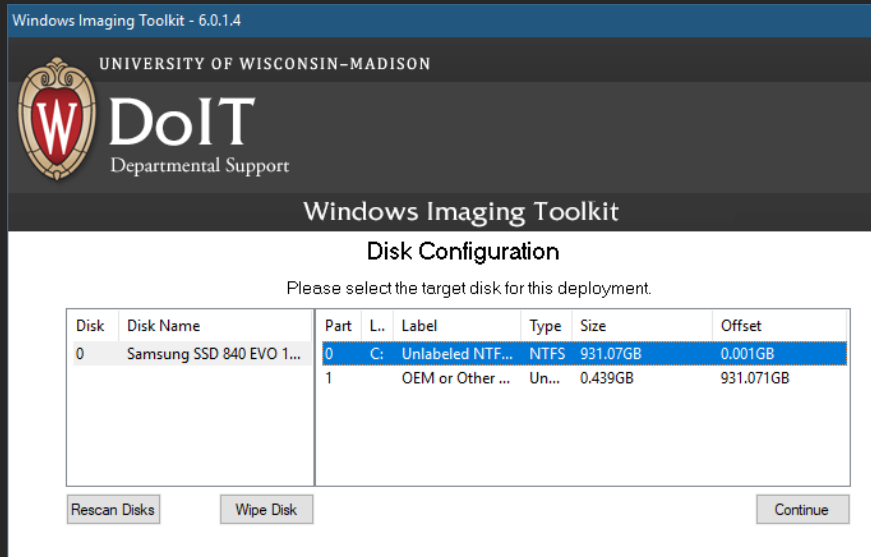


Deploy Studio

- ▶ Partitioning
 - ▶ Single or Dual Boot Options
 - ▶ Legacy or EFI Options
- ▶ Base macOS installation
 - ▶ El Capitan or Sierra
- ▶ AD Bind
- ▶ Software installation



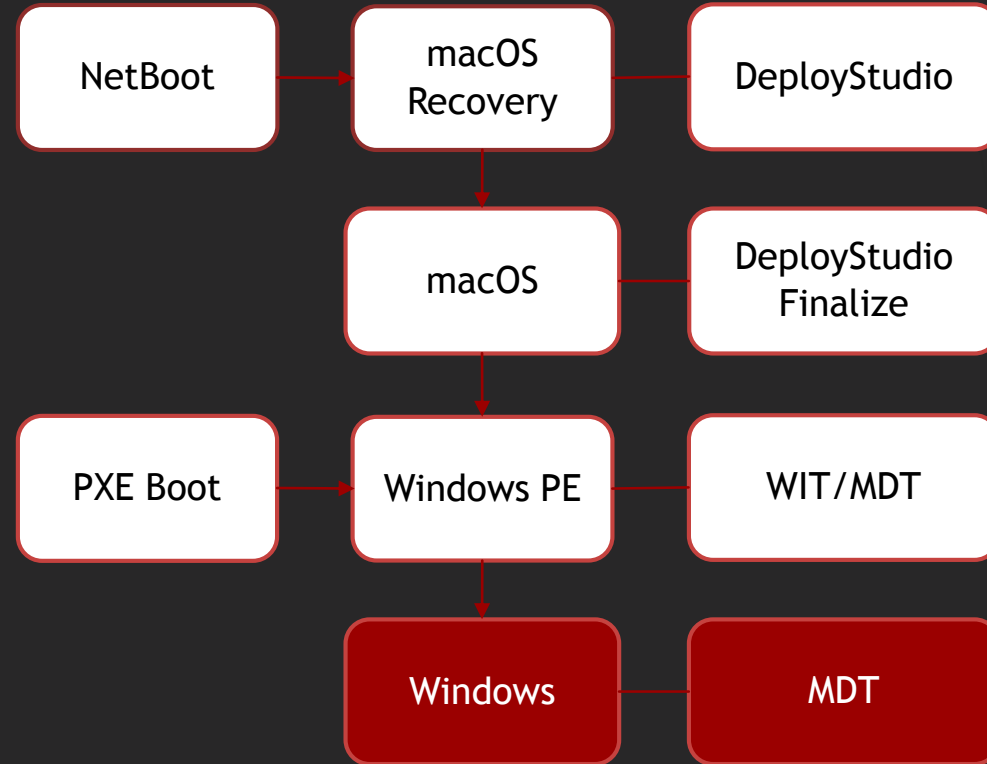
PXE Boot / WinPE



- ▶ PXE Boot a Dell, or boot to WinPE after DeployStudio
- ▶ Select OS, special software, etc.

MDT

- ▶ Install OS
 - ▶ Windows 7, 8, 10, Server
- ▶ Install software
 - ▶ Default options, technician selected
- ▶ Name computer
- ▶ Join domain
- ▶ Run custom scripts
- ▶ Ready!



Thank you!

- ▶ For more information, contact os-deployment@lists.wisc.edu